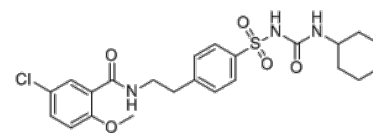


Product Name : Glibenclamide
Cat. No. : PC-21736
CAS No. : 10238-21-8
Molecular Formula : C₂₃H₂₈ClN₃O₅S
Molecular Weight : 494.00
Target : Potassium Channel
Solubility : 10 mM in DMSO



Biological Activity

Glibenclamide (Glyburide) is an orally active ATP-sensitive K⁺ channel (KATP) inhibitor, directly binds and blocks the SUR1 subunits of KATP.

Glibenclamide inhibits P-glycoprotein and the cystic fibrosis transmembrane conductance regulator protein (CFTR). Glibenclamide interferes with mitochondrial bioenergetics by inducing changes on membrane ion permeability.

References

Heo R, et al. Life Sci. 2021;283:119868.

Fernandes MA, et al. J Biochem Mol Toxicol. 2004;18(3):162-169.

Caution: Product has not been fully validated for medical applications. Lab Use Only!

E-mail: tech@probechem.com